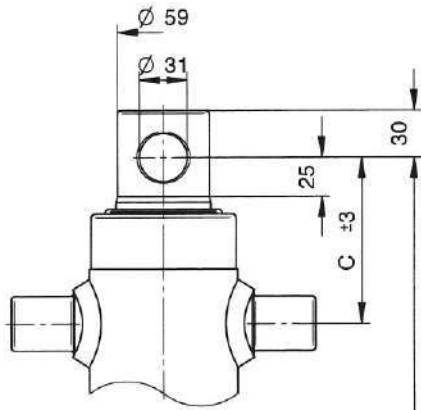
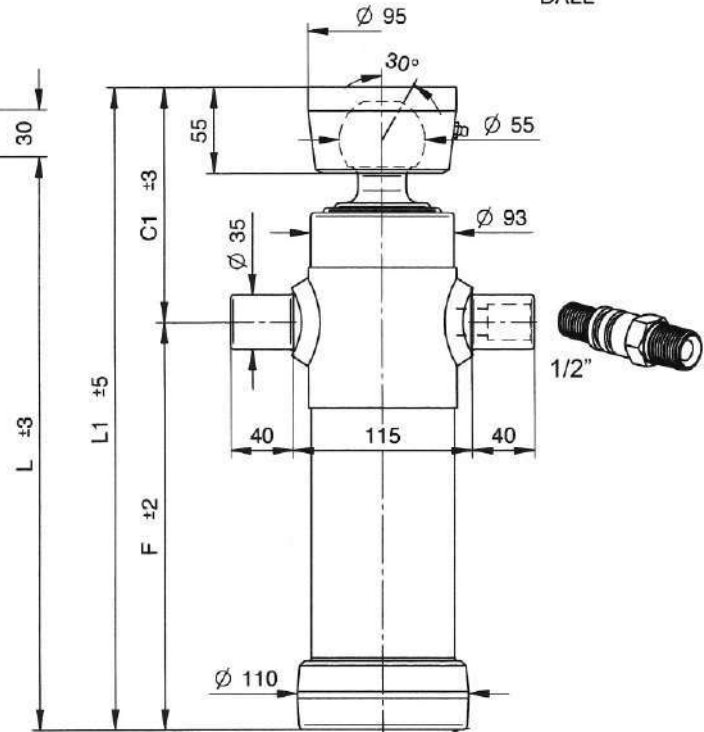


CILINDRI TELESCOPICI / TELESCOPIC CYLINDERS

TYPE 0:
FORO
HOLE



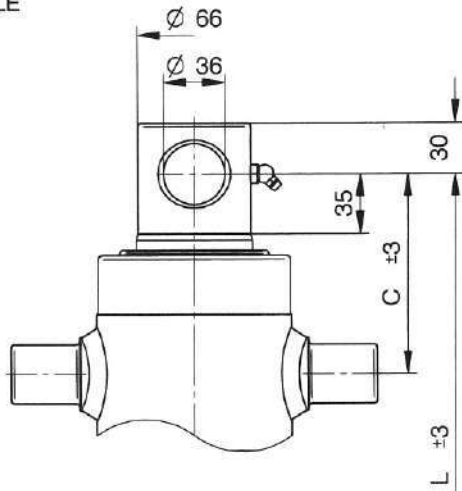
TYPE S:
SFERA
BALL



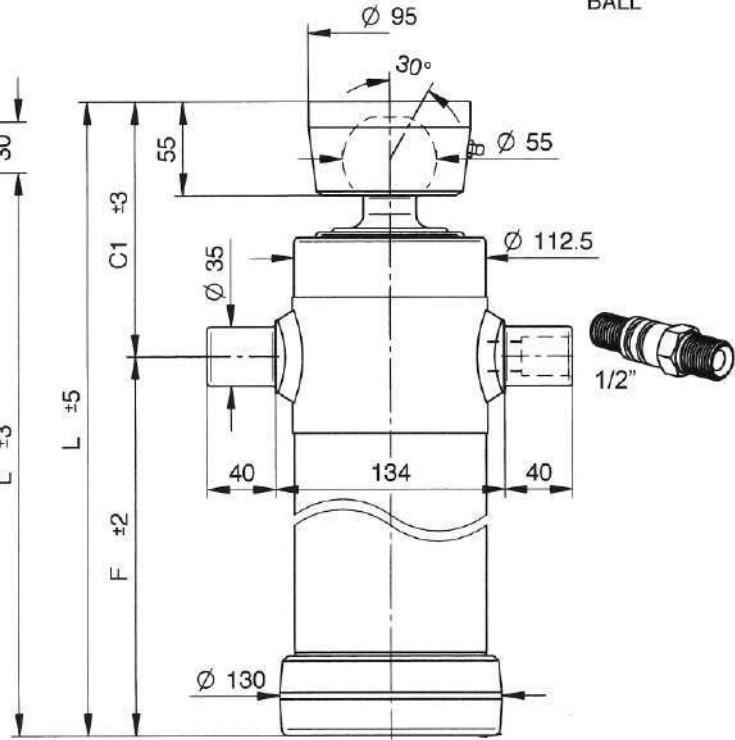
TAV/2B

CODICE CODE	TIPO TYPE	N° SFILATE / EXTENSIONS N°	CORSA mm. STROKE mm.	PORTATA Ton. CAPACITY Ton.	Ø SFILATE mm. Ø EXTENSIONS mm.		DIMENSIONI CILINDRO CYLINDER DIMENSIONS (mm.)					VOLUME OLIO L. AMOUNT OF OIL L.		PESO Kg. WEIGHT Kg.	
					61	76	C	C1	F	L	L1	0	S	0	S
01.S0005 01.00005	3021	2	495	3	•	•	105	150	260	365	410	2	18	20	
01.S0006 01.00006	3022	2	595	3	•	•	105	150	310	415	460	2.3	20	22	
01.S0007 01.00007	3023	2	695	3	•	•	105	150	360	465	510	2.7	23	25	
01.S0008 01.00008	3024	2	795	3	•	•	105	150	410	515	560	3	26	28	

TYPE 0:
FORO
HOLE



TYPE S:
SFERA
BALL

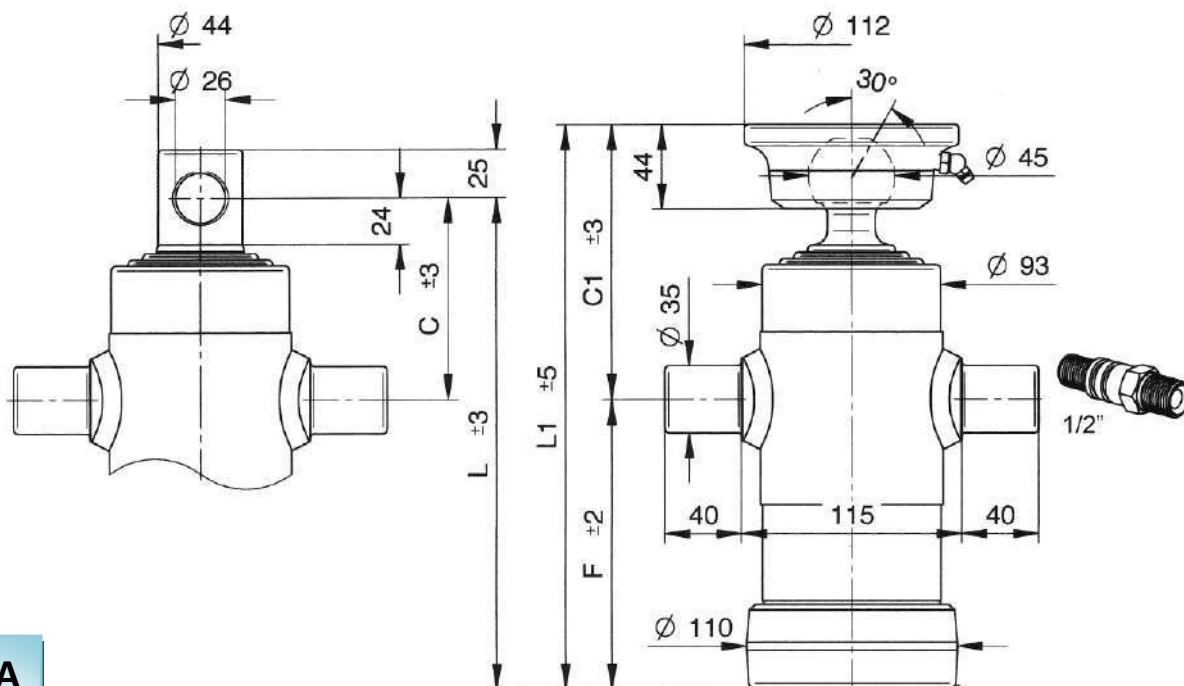


TAV/2C

CODICE CODE	TIPO TYPE	N° SFILATE / EXTENSIONS N°	CORSA mm. STROKE mm.	PORTATA Ton. CAPACITY Ton.	Ø SFILATE mm. Ø EXTENSIONS mm.		DIMENSIONI CILINDRO CYLINDER DIMENSIONS (mm.)					VOLUME OLIO L. AMOUNT OF OIL L.	PESO Kg. WEIGHT Kg.	
					68	88	C	C1	F	L	L1		0	S
01.S0029 01.00029	4021	2	595	9	•	•	115	150	315	430	465	3	27	29
01.S0030 01.00030	4022	2	695	9	•	•	115	150	365	480	515	3.5	30	32
01.S0032 01.00032	4024	2	795	9	•	•	115	150	415	530	565	4	33	35
01.S0061 01.00061	4025	2	895	9	•	•	115	150	465	580	615	4.5	36	38

TYPE 0:
FORO
HOLE

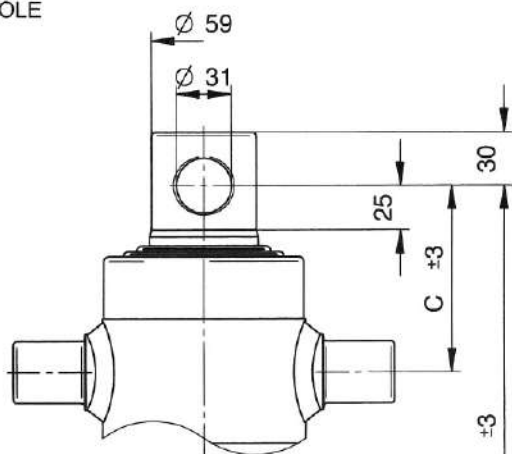
TYPE S:
SFERA
BALL



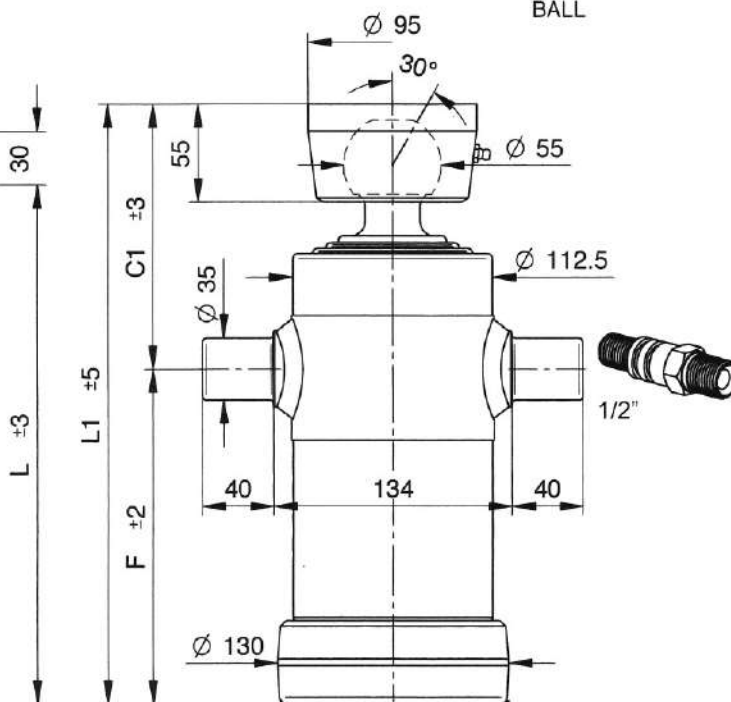
TAV/3A

CODICE CODE	TIPO TYPE	N° SFILATE / EXTENSIONS N°	CORSA mm. STROKE mm.	PORTATA Ton. CAPACITY Ton.	Ø SFILATE mm. Ø EXTENSIONS mm.			DIMENSIONI CILINDRO CYLINDER DIMENSIONS (mm.)					VOLUME OLIO L. AMOUNT OF OIL L.	PESO Kg. WEIGHT Kg.	
					46	61	76	C	C1	F	L	L1		0	S
01.S0001 01.00001	2031	3	500	3	•	•	•	105	142	180	285	322	1.6	14	16
01.S0002 01.00002	2032	3	593	3	•	•	•	105	142	210	315	352	2	15	17
01.S0003 01.00003	2033	3	683	3	•	•	•	105	142	240	345	382	2.2	17	18
01.S0004 01.00004	2034	3	790	3	•	•	•	105	142	275	380	417	2.5	18	20
01.S0055 01.00055	2035	3	893	3	•	•	•	105	142	310	415	452	2.8	20	21
01.S0056 01.00056	2036	3	1043	3	•	•	•	105	142	360	465	502	3.3	22	23
01.S0057 01.00057	2037	3	1283	3	•	•	•	105	142	440	545	582	4	25	27
01.S0058 01.00058	2038	3	1490	3	•	•	•	105	142	510	615	652	4.7	28	30

TYPE 0:
FORO
HOLE



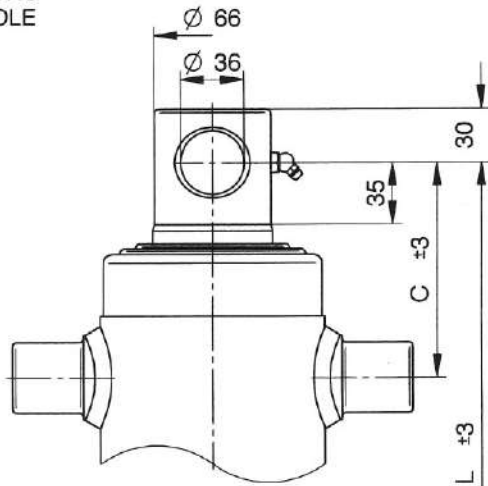
TYPE S:
SFERA
BALL



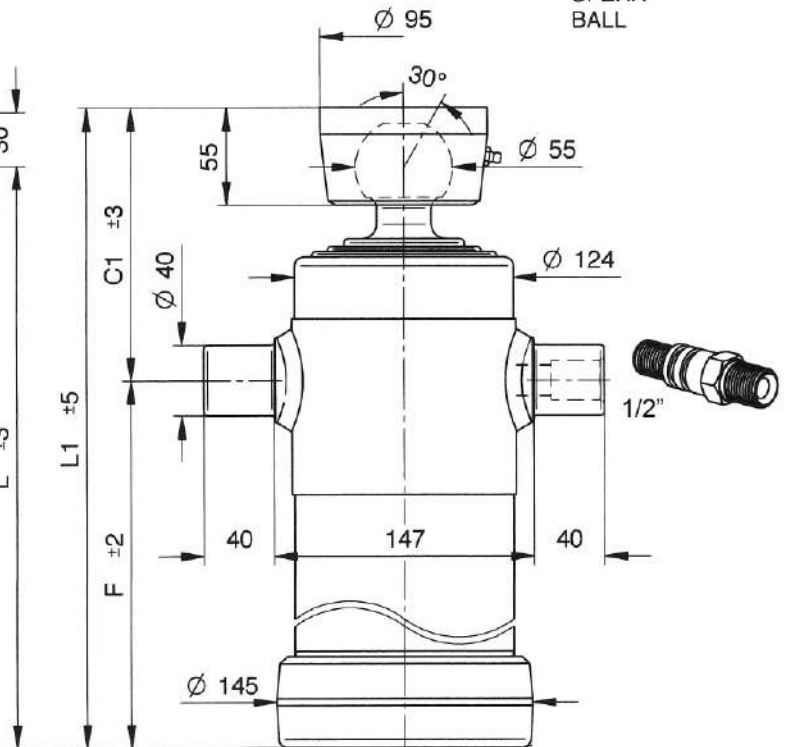
TAV/3B

CODICE CODE	TIPO TYPE	N° SFILATE / EXTENSIONS N°	CORSA mm. STROKE mm.	PORTATA Ton. CAPACITY Ton.	Ø SFILATE mm. Ø EXTENSIONS mm.			DIMENSIONI CILINDRO CYLINDER DIMENSIONS (mm.)					VOLUME OLIO L. AMOUNT OF OIL L.	PESO Kg. WEIGHT Kg.	
					61	76	91	C	C1	F	L	L1		0	S
01.S0009 01.00009	3030	3	500	5	•	•	•	105	147	190	295	337	2.5	20	22
01.S0010 01.00010	3031	3	593	5	•	•	•	105	147	220	325	367	2.8	22	24
01.S0011 01.00011	3032	3	683	5	•	•	•	105	147	250	355	397	3.3	24	26
01.S0012 01.00012	3033	3	785	5	•	•	•	110	152	280	390	432	3.8	27	29
01.S0013 01.00013	3034	3	893	5	•	•	•	110	152	315	425	467	4.2	29	31
01.S0014 01.00014	3035	3	1043	5	•	•	•	110	152	365	475	517	5	33	35

TYPE 0 :
FORO
HOLE



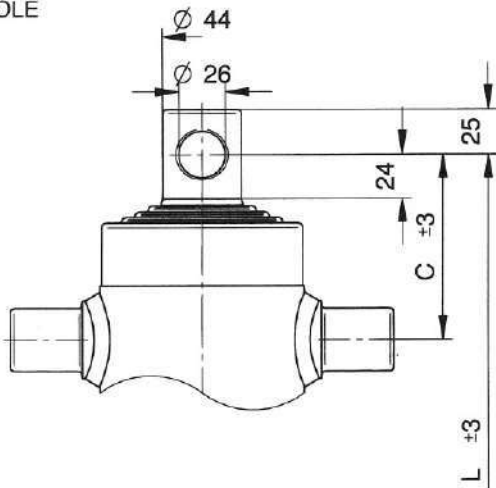
TYPE S :
SFERA
BALL



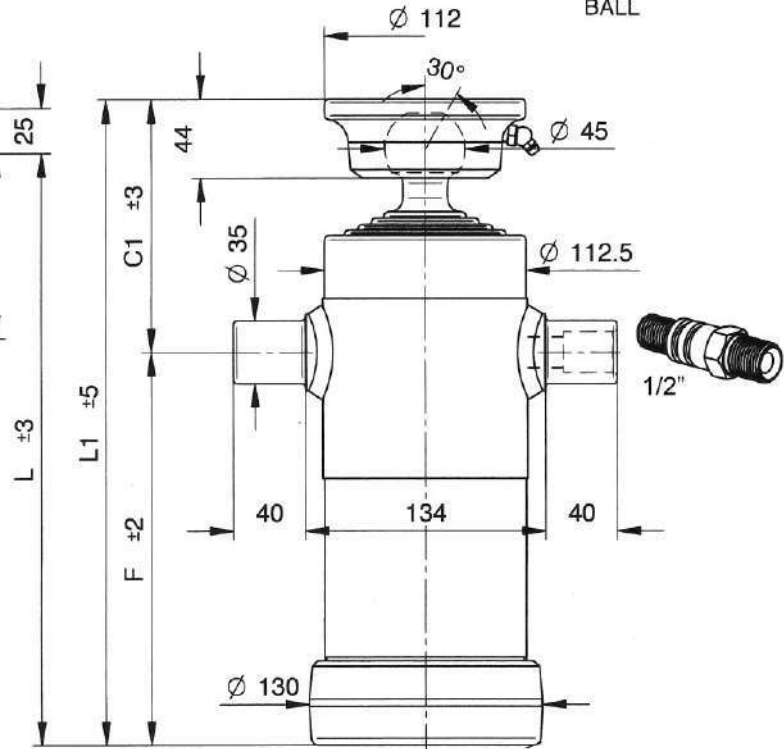
TAV/3C

CODICE CODE	TIPO TYPE	N° SFILATE / EXTENSIONS N°	CORSA mm. STROKE mm.	PORTATA Ton. CAPACITY Ton.	Ø SFILATE mm. Ø EXTENSIONS mm.			DIMENSIONI CILINDRO CYLINDER DIMENSIONS (mm.)					VOLUME OLIO L. AMOUNT OF OIL L.	PESO Kg. WEIGHT Kg.	
					68	88	107	C	C1	F	L	L1		0	S
01.S0033 01.00033	4031	3	743	10	•	•	•	123	155	265	388	421	4.7	33	35
01.S0034 01.00034	4032	3	785	10	•	•	•	123	155	280	403	435	5	34	36
01.S0035 01.00035	4033	3	893	10	•	•	•	123	155	315	438	470	5.7	36	38
01.S0036 01.00036	4034	3	1043	10	•	•	•	123	155	365	488	520	6.6	40	42
01.S0037 01.00037	4035	3	1283	10	•	•	•	123	155	445	568	580	8.2	47	49
01.S0062 01.00062	4037	3	1493	10	•	•	•	123	155	515	638	669	9.4	53	55

TYPE 0:
FORO
HOLE



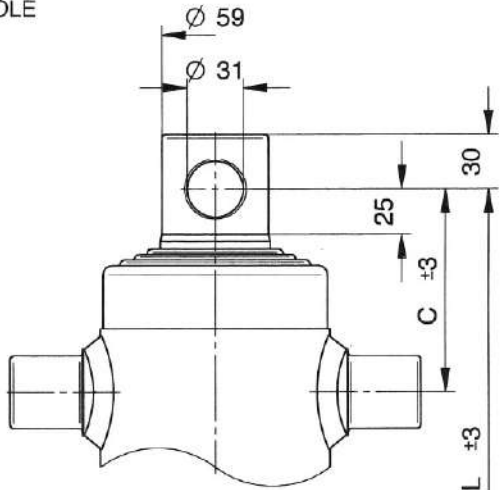
TYPE S:
SFERA
BALL



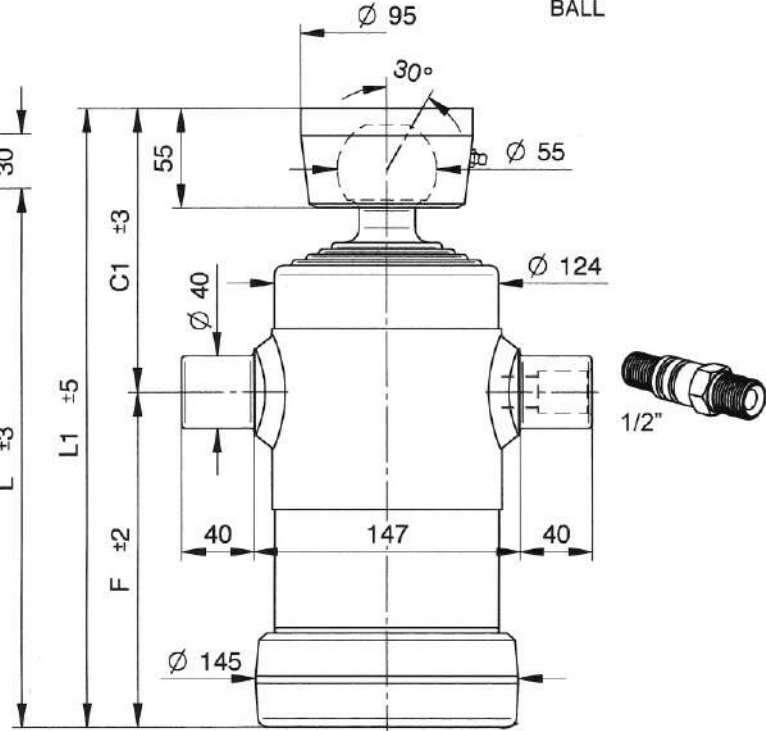
TAV/4A

CODICE CODE	TIPO TYPE	N° SFILATE / EXTENSIONS N°	CORSA mm. STROKE mm.	PORTATA Ton. CAPACITY Ton.	Ø SFILATE mm. Ø EXTENSIONS mm.				DIMENSIONI CILINDRO CYLINDER DIMENSIONS (mm.)					VOLUME OLIO L. AMOUNT OF OIL L.	PESO Kg. WEIGHT Kg.	
					46	61	76	91	C	C1	F	L	L1		0	S
01.S0095 01.00095	3061	4	590	7	•	•	•	•	103	140	170	273	310	2.4	19	20
01.S0096 01.00096	3062	4	670	7	•	•	•	•	103	140	190	293	330	2.7	20	21
01.S0097 01.00097	3063	4	790	7	•	•	•	•	103	140	220	323	360	3.2	21	22
01.S0068 01.00068	3064	4	910	7	•	•	•	•	103	140	250	353	390	3.6	24	25
01.S0069 01.00069	3065	4	1050	7	•	•	•	•	103	140	280	388	425	4.3	26	27
01.S0098 01.00098	3069	4	1190	7	•	•	•	•	108	145	515	623	660	7.9	39	41

TYPE 0:
FORO
HOLE



TYPE S:
SFERA
BALL

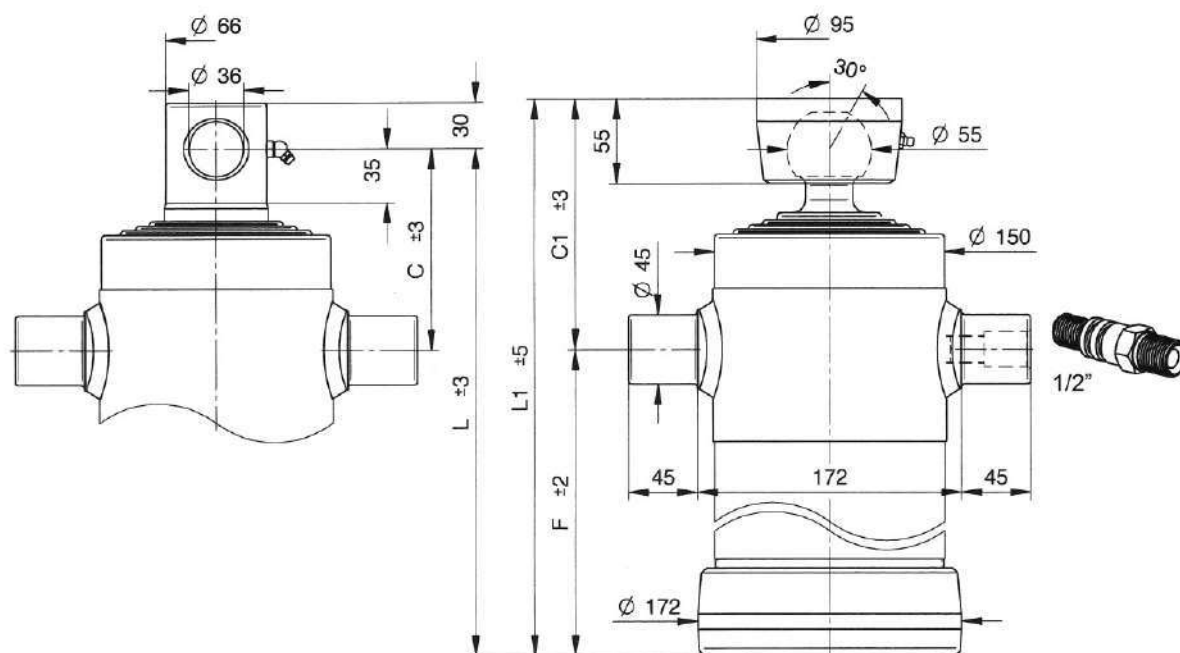


TAV/4B

CODICE CODE	TIPO TYPE	N° SFILATE / EXTENSIONS N°	CORSA mm. STROKE mm.	PORTATA Ton. CAPACITY Ton.	Ø SFILATE mm. Ø EXTENSIONS mm.				DIMENSIONI CILINDRO CYLINDER DIMENSIONS (mm.)					VOLUME OLIO L. AMOUNT OF OIL L.	PESO Kg. WEIGHT Kg.	
					61	76	91	107	C	C1	F	L	L1		0	S
01.S0015 01.00015	3041	4	670	8	•	•	•	•	112	156	185	297	341	4	25	27
01.S0016 01.00016	3042	4	830	8	•	•	•	•	112	156	225	337	381	5	29	30
01.S0017 01.00017	3043	4	950	8	•	•	•	•	112	156	255	367	411	5.6	30	32
01.S0018 01.00018	3044	4	1050	8	•	•	•	•	112	156	280	392	436	6.2	32	34
01.S0019 01.00019	3045	4	1190	8	•	•	•	•	112	156	315	427	471	7	35	36
01.S0020 01.00020	3046	4	1290	8	•	•	•	•	112	156	340	452	496	7.5	38	39
01.S0021 01.00021	3047	4	1510	8	•	•	•	•	112	156	395	507	551	8.8	42	43
01.S0022 01.00022	3048	4	1710	8	•	•	•	•	112	156	445	557	601	10	45	47

TYPE 0:
FORO
HOLE

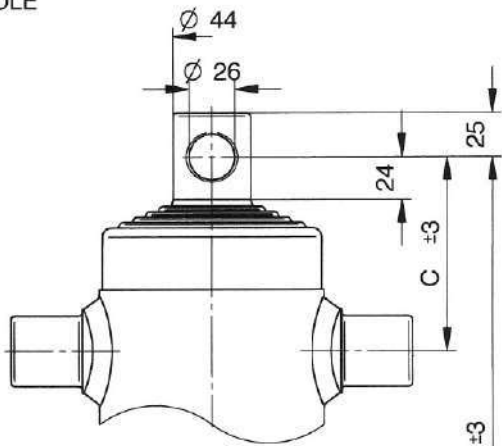
TYPE S:
SFERA
BALL



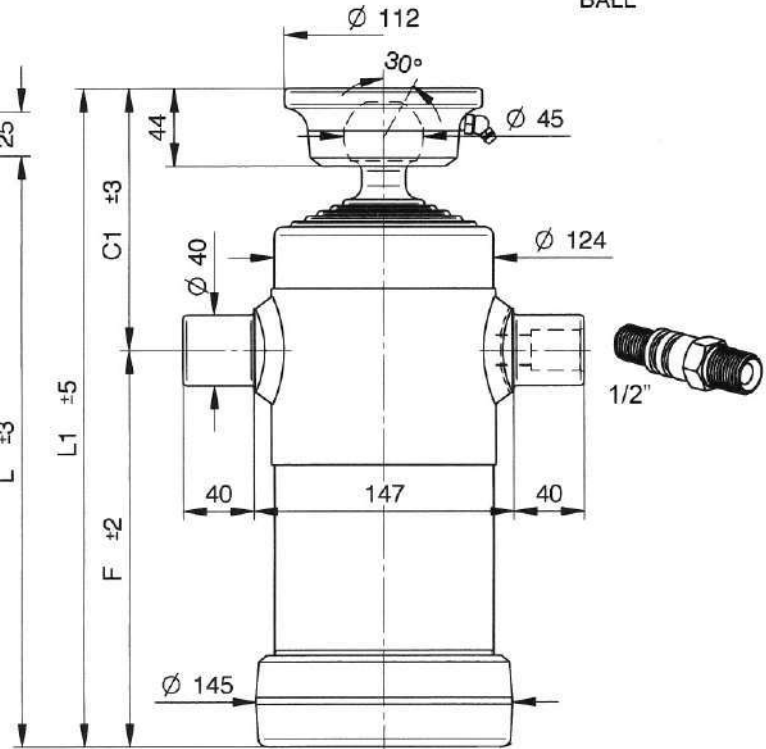
TAV/4C

CODICE CODE	TIPO TYPE	N° SFILATE / EXTENSIONS N°	CORSA mm. STROKE mm.	PORTATA Ton. CAPACITY Ton.	Ø SFILATE mm. Ø EXTENSIONS mm.				DIMENSIONI CILINDRO CYLINDER DIMENSIONS (mm.)					VOLUME OLIO L. AMOUNT OF OIL L.	PESO Kg. WEIGHT Kg.	
					68	88	107	126	C	C1	F	L	L1		0	S
01.S0039 01.00039	4041	4	1040	14	•	•	•	•	130	162	278	408	440	8.3	48	50
01.S0040 01.00040	4042	4	1220	14	•	•	•	•	130	162	325	455	487	9.7	53	55
01.S0041 01.00041	4043	4	1500	14	•	•	•	•	130	162	395	525	557	12	61	63
01.S0042 01.00042	4044	4	1700	14	•	•	•	•	130	162	445	575	607	13.5	67	69

TYPE 0 :
FORO
HOLE



TYPE S :
SFERA
BALL

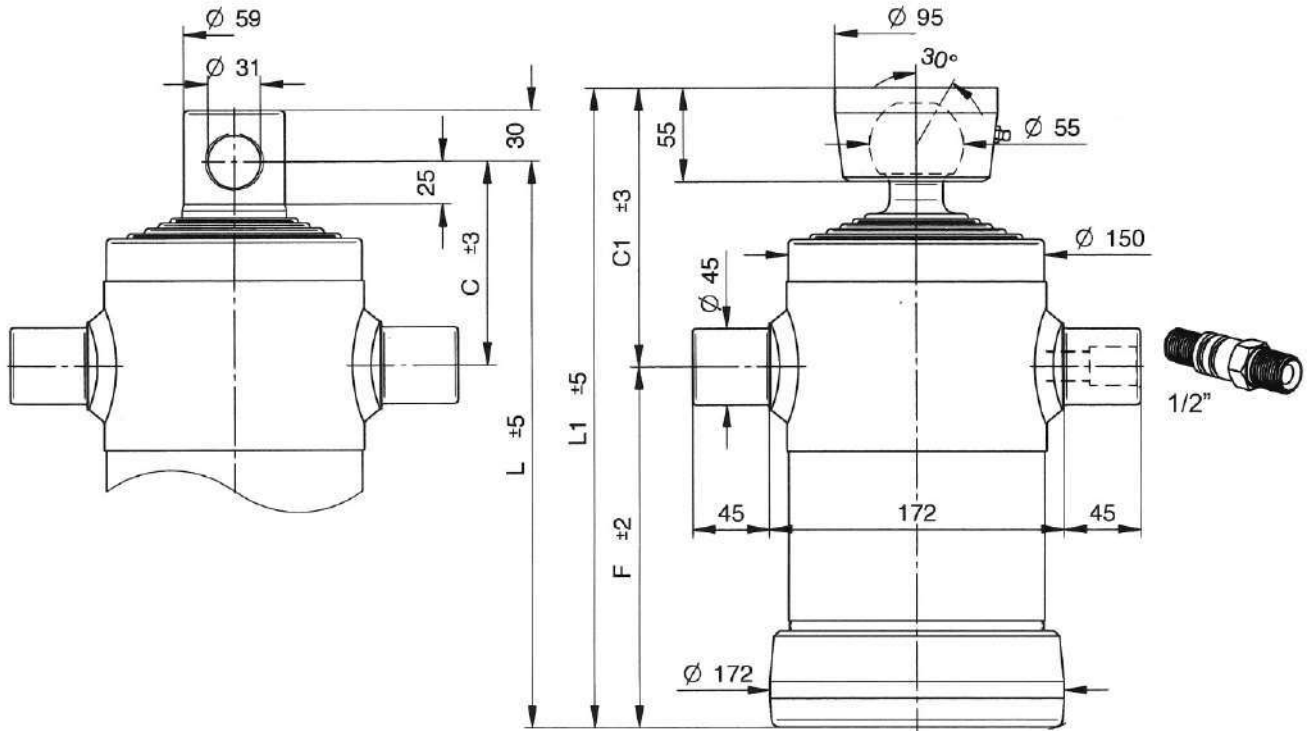


TAV/5A

CODICE CODE	TIPO TYPE	N° SFILATE / EXTENSIONS N°	CORSA mm. STROKE mm.	PORTATA Ton. CAPACITY Ton.	Ø SFILATE mm. Ø EXTENSIONS mm.					DIMENSIONI CILINDRO CYLINDER DIMENSIONS (mm.)					VOLUME OLIO L. AMOUNT OF OIL L.	PESO Kg. WEIGHT Kg.	
					46	61	76	91	107	C	C1	F	L	L1		0	S
01.S0100 01.00100	3090	5	500	8	•	•	•	•	•	110	140	95	195	235	2.5	17	19
01.S0023 01.00023	3050	5	690	8	•	•	•	•	•	110	150	155	265	305	3.5	22	24
01.S0101 01.00101	3091	5	840	8	•	•	•	•	•	110	150	185	295	335	4.5	24	25
01.S0102 01.00102	3092	5	1040	8	•	•	•	•	•	110	150	225	335	375	5	28	29
01.S0103 01.00103	3093	5	1190	8	•	•	•	•	•	110	150	255	365	405	6	30	31
01.S0104 01.00104	3094	5	1490	8	•	•	•	•	•	110	150	315	425	465	7.5	34	35

TYPE 0:
FORO
HOLE

TYPE S:
SFERA
BALL

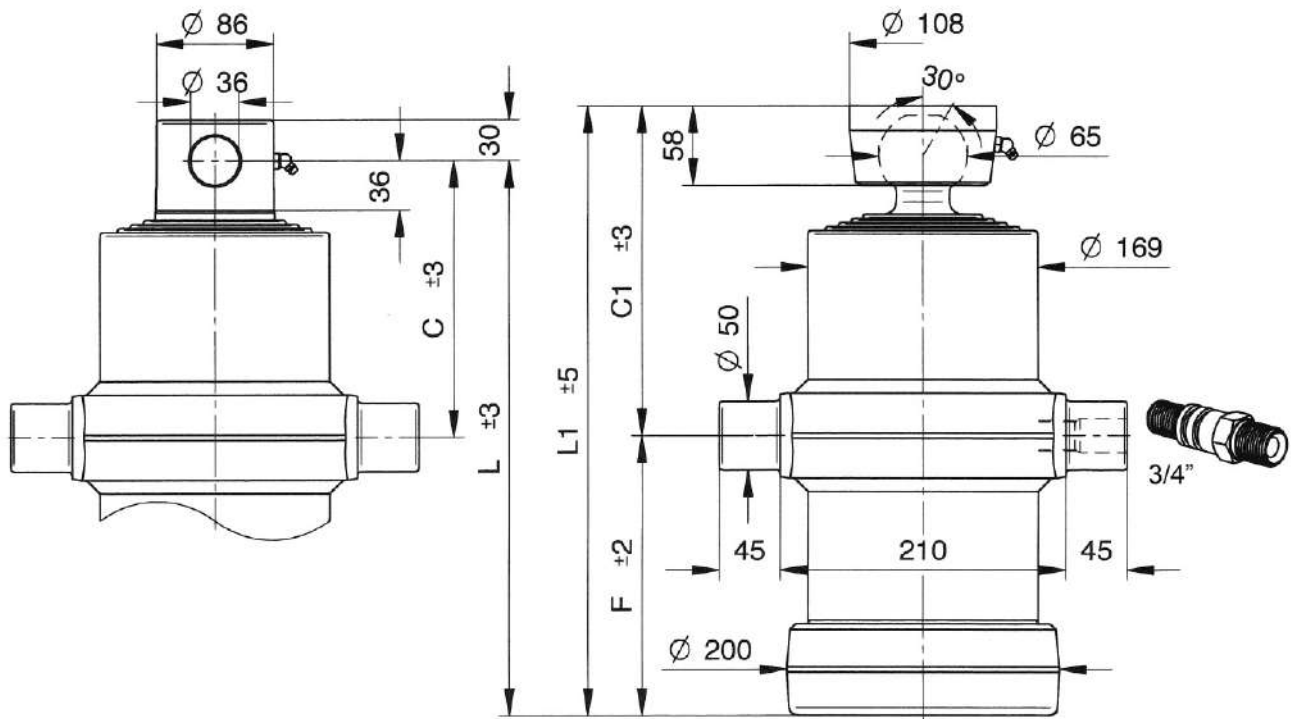


TAV/5B

CODICE CODE	TIPO TYPE	N° SFILATE / EXTENSIONS N°	CORSA mm. STROKE mm.	PORTATA Ton. CAPACITY Ton.	Ø SFILATE mm. Ø EXTENSIONS mm.					DIMENSIONI CILINDRO CYLINDER DIMENSIONS (mm.)					VOLUME OLIO L. AMOUNT OF OIL L.	PESO Kg. WEIGHT Kg.	
					61	76	91	107	126	C	C1	F	L	L1		0	S
01.S0024 01.00024	3051	5	980	10	•	•	•	•	•	120	165	213	383	428	7.5	39	41
01.S0025 01.00025	3052	5	1230	10	•	•	•	•	•	120	165	263	433	478	9	45	47
01.S0026 01.00026	3053	5	1480	10	•	•	•	•	•	120	165	313	513	558	11	52	53
01.S0027 01.00027	3054	5	1880	10	•	•	•	•	•	120	165	393	563	608	13.5	60	62
01.S0028 01.00028	3055	5	2130	10	•	•	•	•	•	120	165	443	633	678	15.5	66	67
01.S0059 01.00059	3056	5	2480	10	•	•	•	•	•	120	165	513	633	678	18	74	75
01.S0060 01.00060	3058	5	1610	10	•	•	•	•	•	120	165	338	458	503	12	55	56

TYPE 0 :
FORO
HOLE

TYPE S :
SFERA
BALL

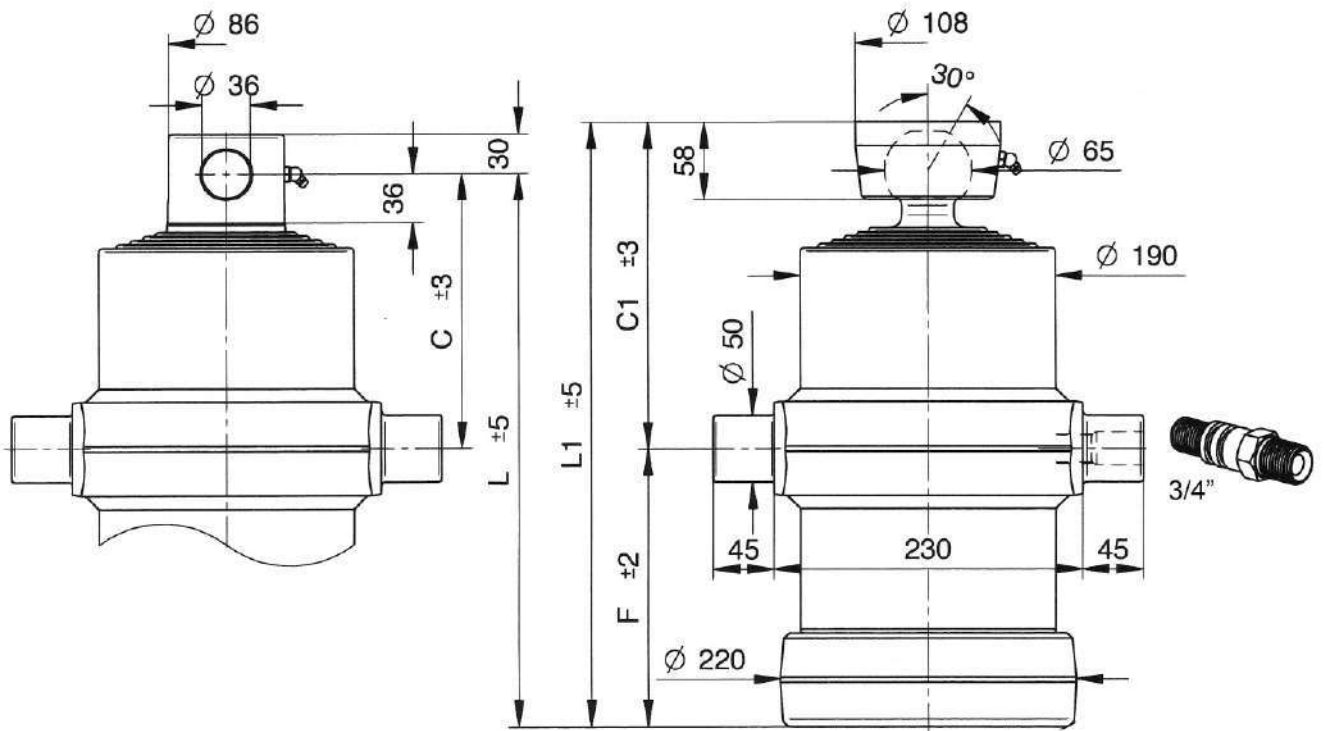


TAV/4D – 5C

CODICE CODE	TIPO TYPE	N° SFILATE / EXTENSIONS N°	CORSA mm. STROKE mm.	PORTATA Ton. CAPACITY Ton.	Ø SFILATE mm. Ø EXTENSIONS mm.					DIMENSIONI CILINDRO CYLINDER DIMENSIONS (mm.)					VOLUME OLIO L. AMOUNT OF OIL L.	PESO Kg. WEIGHT Kg.		
					68	88	107	126	145	C	C1	F	L	L1		0	S	
01.S0043 01.00043	4045	4	1490	18		•	•	•	•	•	200	240	320	520	560	16.8	71	73
01.S0044 01.00044	4046	4	1680	18		•	•	•	•	•	200	240	370	570	610	19	78	80
01.S0045 01.00045	4047	4	1960	18		•	•	•	•	•	200	240	440	640	680	22.2	86	88
01.S0047 01.00047	4050	5	1870	16	•	•	•	•	•	•	208	245	320	528	565	18.2	81	84
01.S0048 01.00048	4051	5	2105	16	•	•	•	•	•	•	208	245	370	578	615	20.5	87	90
01.S0063 01.00063	5002	5	2455	16	•	•	•	•	•	•	208	245	440	648	685	24	97	100

TYPE 0 :
FORO
HOLE

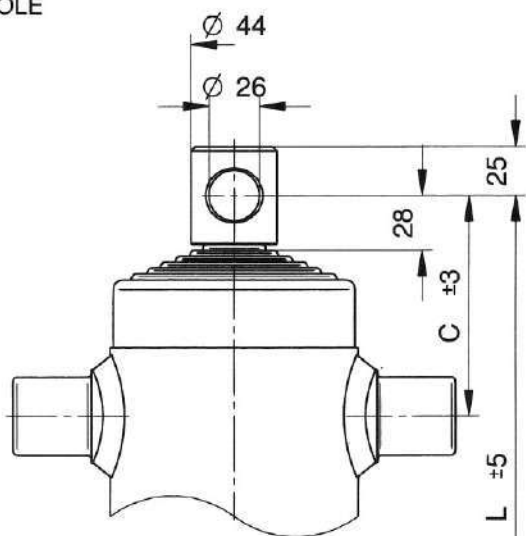
TYPE S :
SFERA
BALL



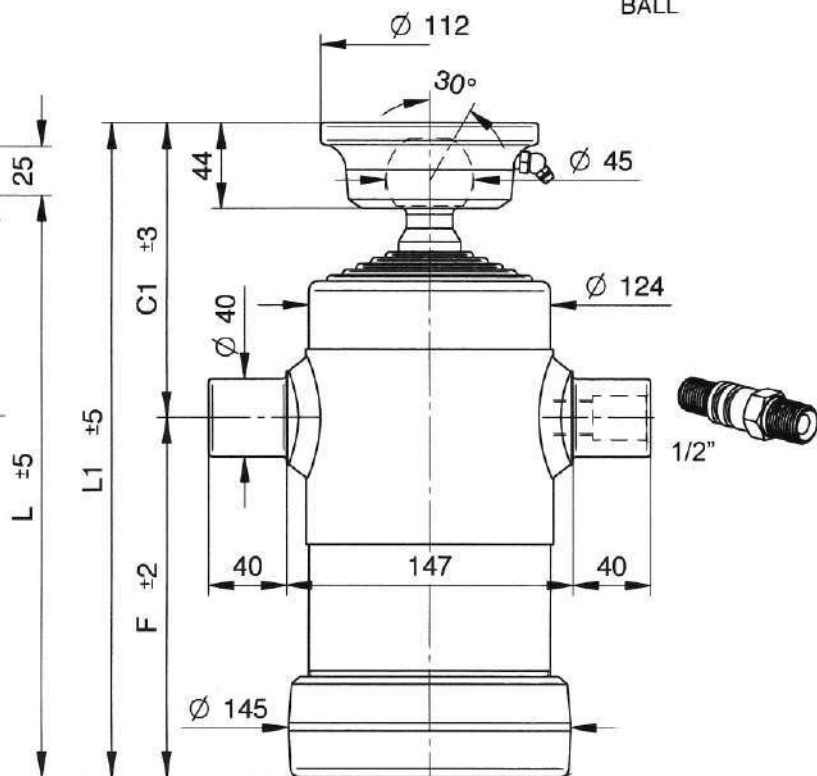
TAV/5D

CODICE CODE	TIPO TYPE	N° SFILATE / EXTENSIONS N°	CORSA mm. STROKE mm.	PORTATA Ton. CAPACITY Ton.	Ø SFILATE mm. Ø EXTENSIONS mm.					DIMENSIONI CILINDRO CYLINDER DIMENSIONS (mm.)					VOLUME OLIO L. AMOUNT OF OIL L.	PESO Kg. WEIGHT Kg.	
					88	107	126	145	165	C	C1	F	L	L1		0	S
01.S0064 01.00064	5007	5	1850	20	•	•	•	•	•	205	245	323	528	568	25	93	96
01.S0049 01.00049	4052	5	2060	20	•	•	•	•	•	205	245	373	578	618	28.2	99	102
01.S0050 01.00050	4053	5	2410	20	•	•	•	•	•	205	245	443	648	688	32.8	110	113
01.S0105 01.00105	5011	5	2990	20	•	•	•	•	•	205	245	573	778	818	40	132	135

TYPE 0 :
FORO
HOLE



TYPE S :
SFERA
BALL

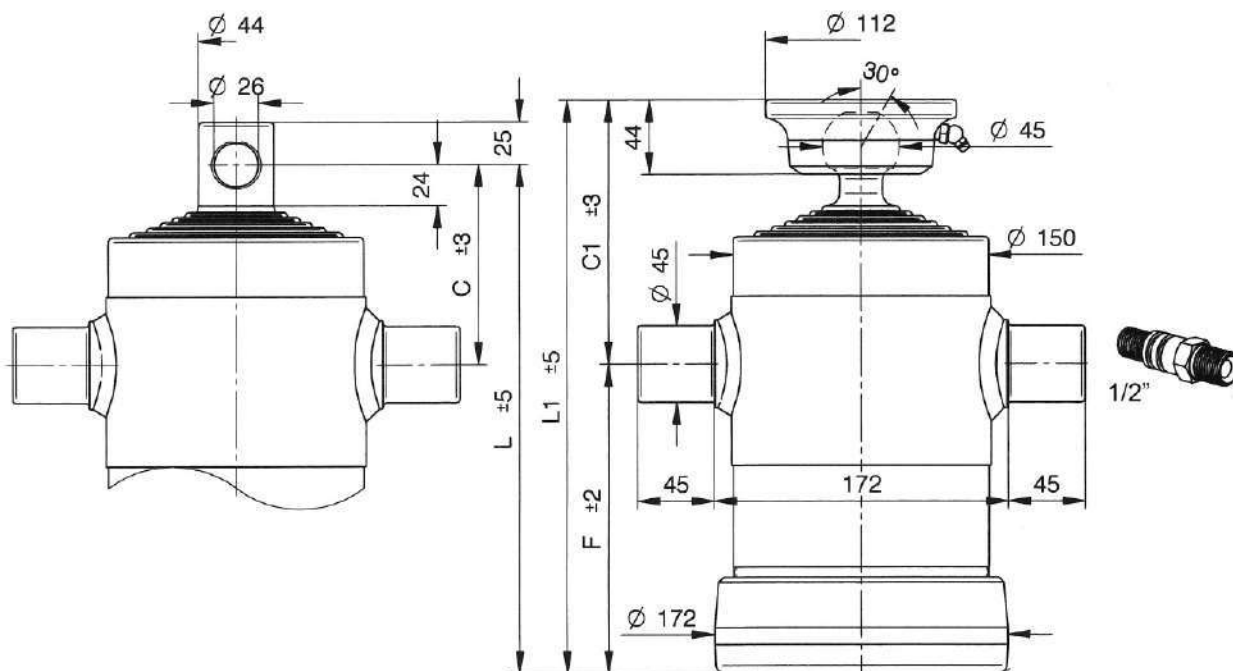


TAV/6AK

CODICE CODE	TIPO TYPE	N° SFILATE / EXTENSIONS N°	CORSA mm. STROKE mm.	PORTATA Ton. CAPACITY Ton.	Ø SFILATE mm. Ø EXTENSIONS mm.						DIMENSIONI CILINDRO CYLINDER DIMENSIONS (mm.)					VOLUME OLIO L. AMOUNT OF OIL L.		PESO Kg. WEIGHT Kg.	
					32	46	61	76	91	107	C	C1	F	L	L1	0	S	0	S
01.S0106 01.00106	6000	6	600	6	•	•	•	•	•	•	97	135	98	195	233	3	18	20	
01.S0107 01.00107	6001	6	450	6	•	•	•	•	•	•	70	105	95	165	200	2.5	13	15	
01.S0108 01.00108	6002	6	840	6	•	•	•	•	•	•	100	135	155	255	290	3.6	21	23	
01.S0109 01.00109	6003	6	1005	6	•	•	•	•	•	•	115	155	185	300	340	4.5	24	26	
01.S0110 01.00110	6004	6	1245	6	•	•	•	•	•	•	115	155	225	340	380	5.5	27	29	

TYPE 0:
FORO
HOLE

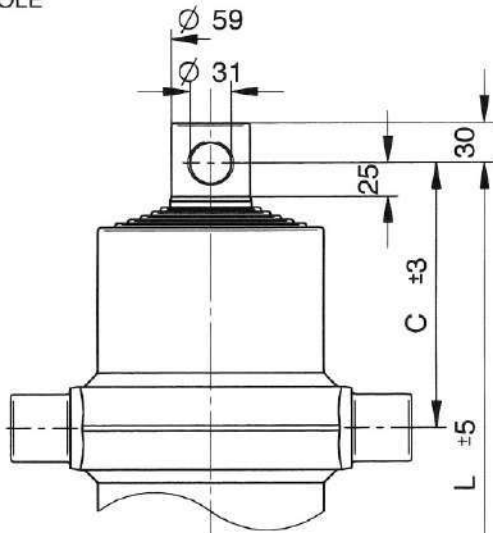
TYPE S:
SFERA
BALL



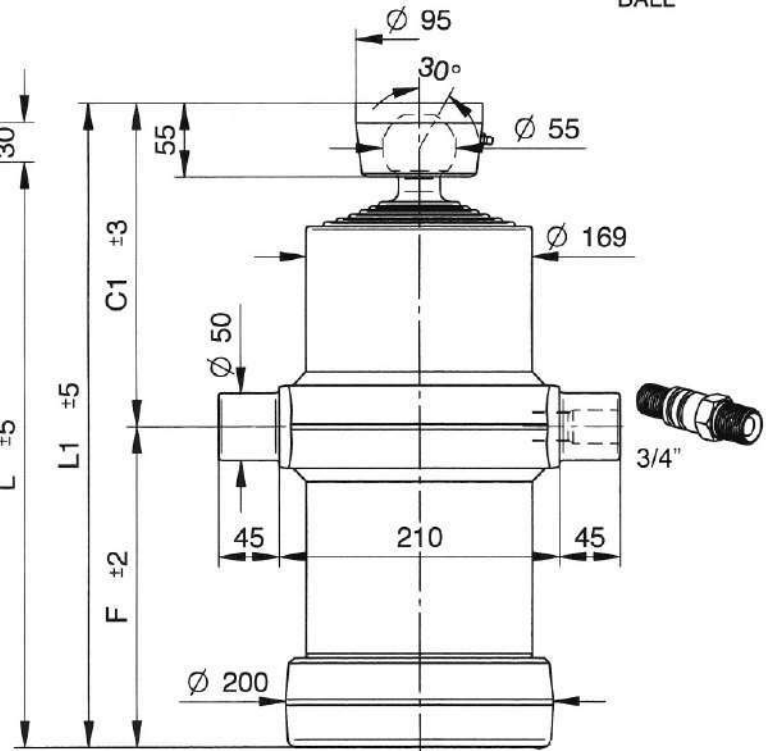
TAV/6A

CODICE CODE	TIPO TYPE	N° SFILATE / EXTENSIONS N°	CORSA mm. STROKE mm.	PORTATA Ton. CAPACITY Ton.	Ø SFILATE mm. Ø EXTENSIONS mm.						DIMENSIONI CILINDRO CYLINDER DIMENSIONS (mm.)					VOLUME OLIO L. AMOUNT OF OIL L.	PESO Kg. WEIGHT Kg.	
					46	61	76	91	107	126	C	C1	F	L	L1		0	S
01.S0111 01.00111	6005	6	690	9	•	•	•	•	•	•	108	145	123	231	268	4.3	27	29
01.S0112 01.00112	6006	6	1000	9	•	•	•	•	•	•	118	155	183	301	338	6.5	34	36
01.S0113 01.00113	6007	6	1180	9	•	•	•	•	•	•	118	155	213	331	368	7.1	38	40
01.S0114 01.00114	6008	6	1480	9	•	•	•	•	•	•	118	155	263	381	418	8.9	44	46
01.S0115 01.00115	6009	6	1780	9	•	•	•	•	•	•	118	155	313	431	468	11.2	49	51
01.S0116 01.00116	6010	6	2257	9	•	•	•	•	•	•	118	155	393	511	548	12	56	58

TYPE 0 :
FORO
HOLE



TYPE S :
SFERA
BALL

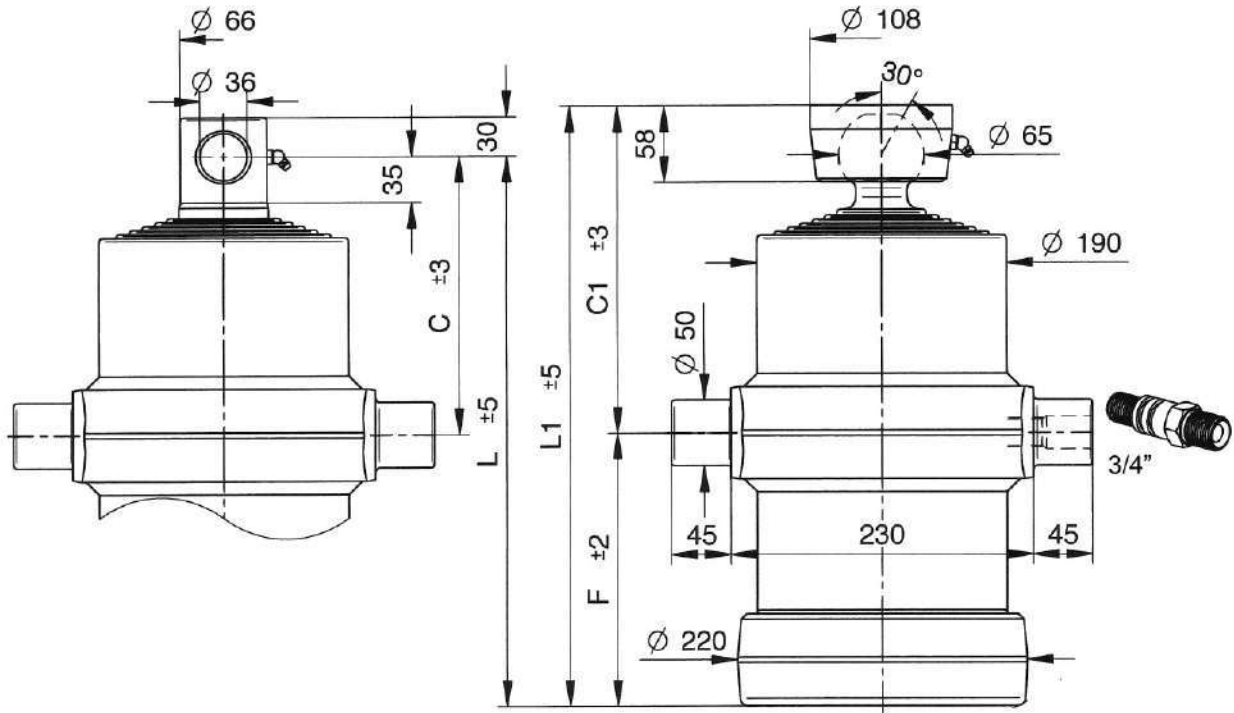


TAV/6B

CODICE CODE	TIPO TYPE	N° SFILATE / EXTENSIONS N°	CORSA mm. STROKE mm.	PORTATA Ton. CAPACITY Ton.	Ø SFILATE mm. Ø EXTENSIONS mm.						DIMENSIONI CILINDRO CYLINDER DIMENSIONS (mm.)					VOLUME OLIO L. AMOUNT OF OIL L.	PESO Kg. WEIGHT Kg.	
					61	76	91	107	126	145	C	C1	F	L	L1		0	S
01.S0117 01.00117	6021	6	1765	13	•	•	•	•	•	•	198	242	240	438	482	15.6	68	70
01.S0118 01.00118	6022	6	2245	13	•	•	•	•	•	•	198	242	320	518	562	19.8	78	80
01.S0119 01.00119	6023	6	2535	13	•	•	•	•	•	•	198	242	370	568	612	23	86	88
01.S0120 01.00120	6024	6	2955	13	•	•	•	•	•	•	198	242	440	638	682	26	95	97
01.S0121 01.00121	6025	6	3585	13	•	•	•	•	•	•	198	242	570	768	812	32	114	116

TYPE 0 :
FORO
HOLE

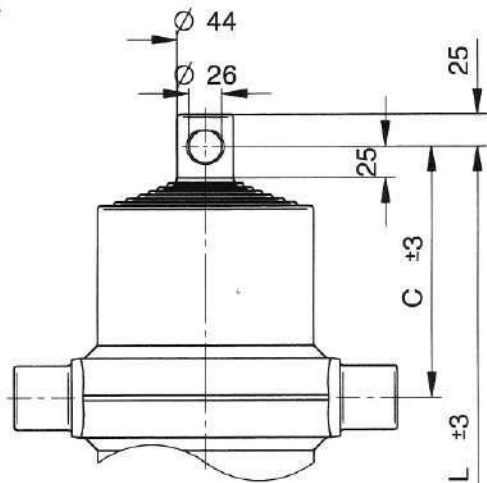
TYPE S :
SFERA
BALL



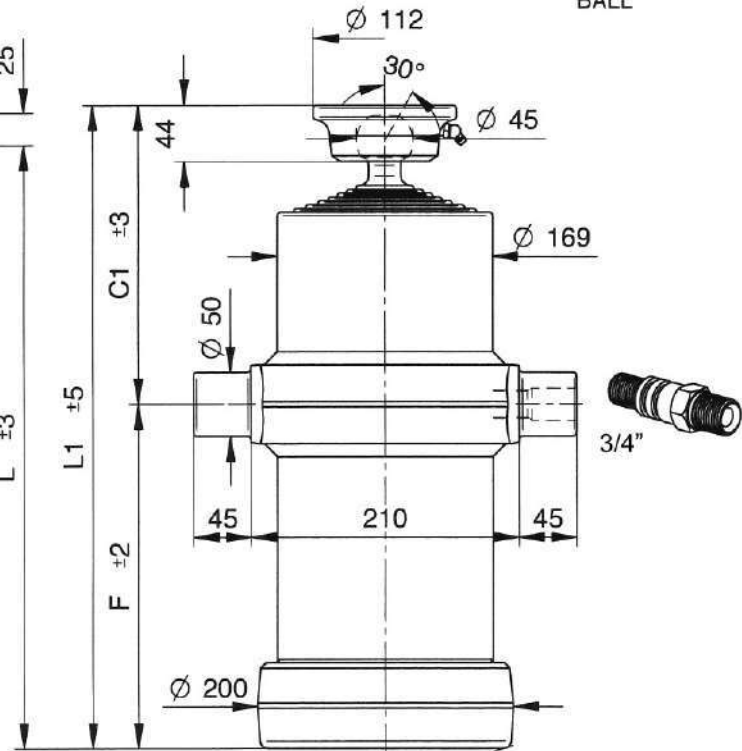
TAV/6C

CODICE CODE	TIPO TYPE	N° SFILATE / EXTENSIONS N°	CORSA mm. STROKE mm.	PORTATA Ton. CAPACITY Ton.	Ø SFILATE mm. Ø EXTENSIONS mm.						DIMENSIONI CILINDRO CYLINDER DIMENSIONS (mm.)					VOLUME OLIO L. AMOUNT OF OIL L.	PESO Kg. WEIGHT Kg.	
					68	88	107	126	145	165	C	C1	F	L	L1		0	S
01.S0066 01.00066	4059	6	1810	20	•	•	•	•	•	•	212	248	253	465	501	21.5	88	91
01.S0051 01.00051	4060	6	2225	20	•	•	•	•	•	•	212	248	323	535	571	25.9	100	103
01.S0052 01.00052	4061	6	2490	20	•	•	•	•	•	•	212	248	373	585	621	29.4	109	112
01.S0053 01.00053	4062	6	2910	20	•	•	•	•	•	•	212	248	443	655	691	34.6	122	125
01.S0067 01.00067	4063	6	3405	20	•	•	•	•	•	•	212	248	543	755	791	40	141	144

TYPE 0 :
FORO
HOLE



TYPE S :
SFERA
BALL

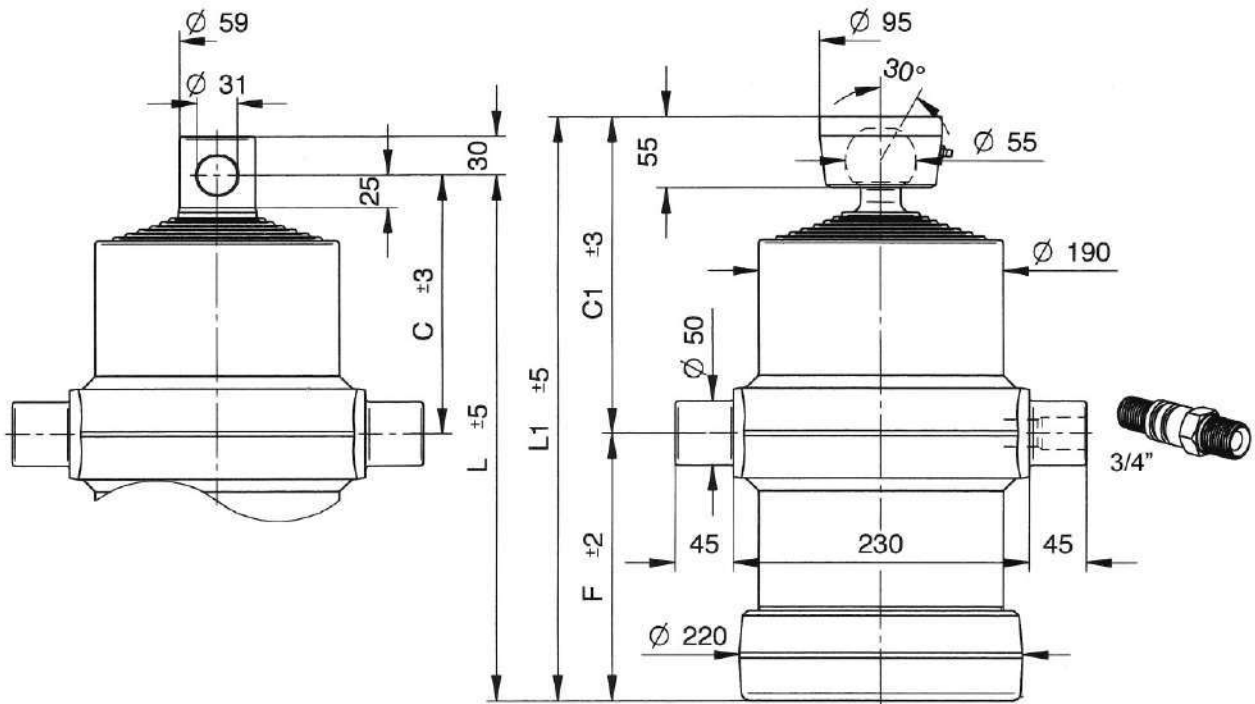


TAV/7A

CODICE CODE	TIPO TYPE	N° SFILATE / EXTENSIONS N°	CORSA mm. STROKE mm.	PORTATA Ton. CAPACITY Ton.	Ø SFILATE mm. Ø EXTENSIONS mm.						DIMENSIONI CILINDRO CYLINDER DIMENSIONS (mm.)					VOLUME OLIO L. AMOUNT OF OIL L.	PESO Kg. WEIGHT Kg.		
					46	61	76	91	107	126	145	C	C1	F	L		L1	0	S
01.S0122 01.00122	7005	7	1150	11	•	•	•	•	•	•	•	196	235	110	306	345	9	47	49
01.S0123 01.00123	7006	7	1360	11	•	•	•	•	•	•	•	196	235	140	336	375	11	51	53
01.S0124 01.00124	7007	7	1710	11	•	•	•	•	•	•	•	196	235	190	386	425	13	56	58
01.S0125 01.00125	7008	7	1815	11	•	•	•	•	•	•	•	196	235	205	401	440	14	58	60
01.S0126 01.00126	7009	7	2060	11	•	•	•	•	•	•	•	196	235	240	436	475	16	65	67

TYPE 0 :
FORO
HOLE

TYPE S :
SFERA
BALL



TAV/7B

CODICE CODE	TIPO TYPE	N° SFILATE / EXTENSIONS N°	CORSA mm. STROKE mm.	PORTATA Ton. CAPACITY Ton.	Ø SFILATE mm. Ø EXTENSIONS mm.						DIMENSIONI CILINDRO CYLINDER DIMENSIONS (mm.)					VOLUME OLIO L. AMOUNT OF OIL L.	PESO Kg. WEIGHT Kg.		
					61	76	91	107	126	145	165	C	C1	F	L		L1	0	S
01.S0127 01.00127	7018	7	1800	14	•	•	•	•	•	•	•	200	245	208	408	453	20	80	82
01.S0128 01.00128	7019	7	2045	14	•	•	•	•	•	•	•	200	245	243	443	488	22	87	89
01.S0129 01.00129	7020	7	2605	14	•	•	•	•	•	•	•	200	245	323	523	568	28	101	103
01.S0130 01.00130	7021	7	2920	14	•	•	•	•	•	•	•	200	245	373	573	618	32	110	112
01.S0131 01.00131	7022	7	3410	14	•	•	•	•	•	•	•	200	245	443	643	688	38	123	125