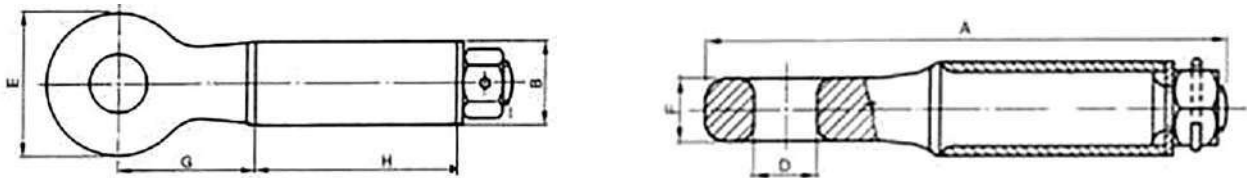


OCCHIONI DI TRAINO/TOWING EYES

TIPO GIREVOLE OMOLOGATO "CUNA"/ SLEWING "CUNA" TYPE HOMOLOGATED



CODICE CODE	TIPO TYPE	A mm.	B mm.	DADO NUT	D mm.	E mm.	F mm.	G mm.	H mm.	CARICO Kg. LOAD Kg.			PESO Kg. WEIGH Kg.
										TRAINO TOW	VERTICALE VERTICAL	DINAMICO DYNAMIC	
10.01317	E	334	60	M33	35	95	30	110	145	6000	-	-	6
10.01318	E1	263	42	M24	22	62	20	90	110	3000	250	1000	2
10.01319	E2	334	60	M33	35	95	30	110	145	6000	500	3000	6
10.013201	E3	334	60	M33	35	95	30	110	145	6000	1500	4500	6
10.01321	F	370	63.5	M33	45	109	32	130	145	12000	-	-	7.5
10.01322	F1	452	76	M42x3	68	152	42	170	150	20000	-	-	13
10.01323	F2	412	70	M39x3	50	120	35	150	145	14000	2000	5750	9.5
10.01326	F2	418	82	M45x3	50	120	35	150	150	14000	2000	6700	12
10.01324	F3	475	76	M42x3	76.2	160	42	190	170	20000	2500	7500	14
10.01325	F3 1700	500	89	M45x3	76.2	160	42	190	170	20000	2500	8800	18

TIPO GIREVOLE NUOVA OMOLOGAZIONE EUROPEA "EU 2015-208"
SLEWING TYPE NEW EUROPEAN REGULATION "EU 2015-208"

CODICE CODE	TIPO TYPE	A mm.	B mm.	DADO NUT	D mm.	E mm.	F mm.	G mm.	H mm.	CARICO/LOAD			PESO Kg. WEIGHT Kg.
										VERTICALE Kg. VERTICAL Kg.	Dc (kN)	D (kN)	
10.013201	E3-00210	334	60	M33	35	95	30	110	145	1470	36.8	46	6
10.01323E	F2-00211	410	76	M42x3	50	120	35	150	145	2700	67.5	92	10
10.01324E	F3-00428	476	89	M45x3	68	152	42	170	170	3000	91.5	120	17
10.010151E	SUPER- 00377	380	82	M45x3	50	122	35	110	150	3705	84.1	125	11.8
10.010152E	SUPER- 30057	380	82	M45x3	50	126	41	110	150	4000	95.6	135	12.3