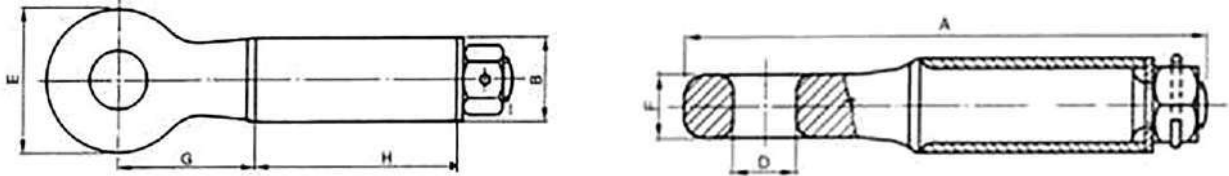


## OCCHIONI DI TRAINO/TOWING EYES

TIPO GIREVOLE VECCHIA OMOLOGAZIONE/SLEWING TYPE OLD HOMOLOGATION



CODICE CODE	TIPO TYPE	A mm.	B mm.	DADO NUT	D mm.	E mm.	F mm.	G mm.	H mm.	CARICO Kg. LOAD Kg.		PESO WEIGHT (Kg.)
										TRAINO TOW	VERTICALE VERTICAL	
10.01007	LEGGERO LIGHT	272	42	M24	30	85	25	98	110	/	/	2.7
10.01008	E 701	340	48	M30	45	96	32	115	130	6000	/	4.3
10.01009	E 990	327	51	M30	45	104	30	96	150	6000	/	4.8
10.010091	E 990	340	57	M30	45	105	31	96	150	6000	/	5.4
10.01010	F 702	343	58	M33	45	98	33	125	135	12000	/	5.4
10.01011	F 987	339	63	M33	45	112	43	98	147	12000	/	7.6
10.010111	F 987	339	70	M33	45	112	43	98	147	12000	/	8.2
10.01012	E 414	365	60	M33	45	100	40	120	150	6000	/	6.9
10.01013	E 988	336	63	M33	45	105	36	98	147	6000	/	7
10.010131	E 988	336	70	M33	45	105	36	98	147	6000	/	7.6
10.01014	E 989	336	63	M33	45	105	37	98	147	6000	/	7.1
10.010141	E 989	336	70	M33	45	105	37	98	147	6000	/	7.7
10.01016	FRANCIA FRANCE	324	60	M33	50	110	30	90	135	14000	1700	6.4
10.010151	SUPER	376	82	M45	50	126	41	110	150	28000	2600	12.3